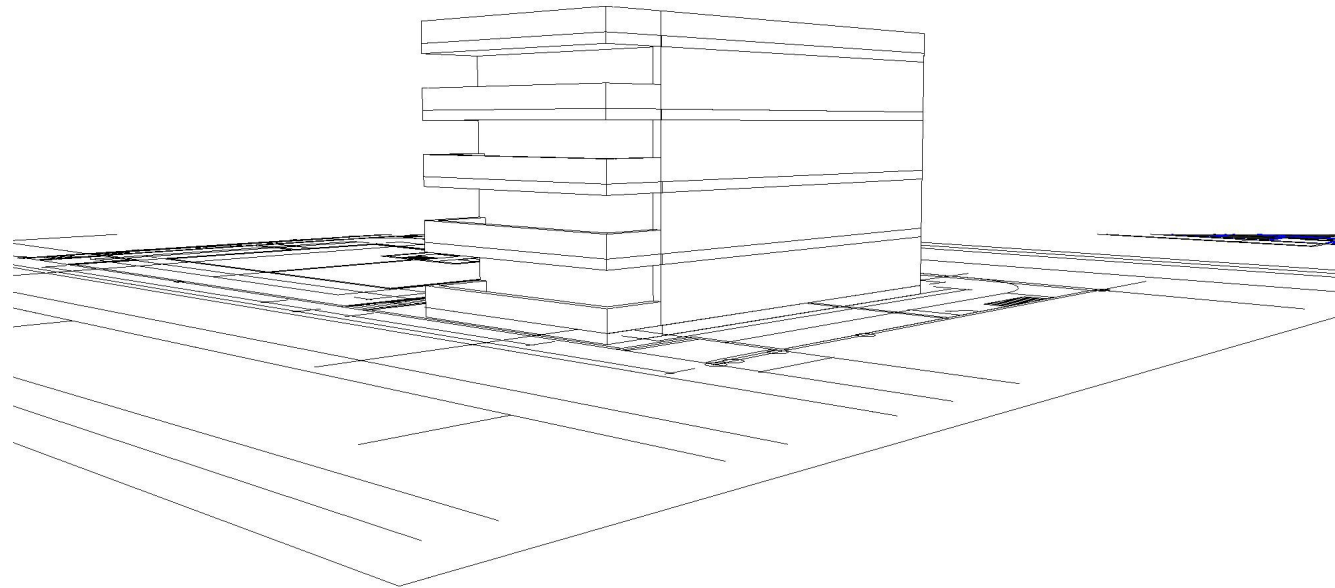


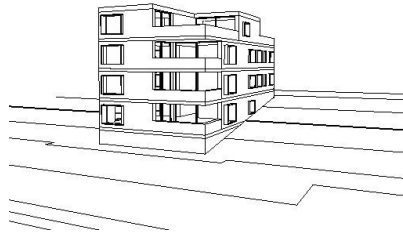
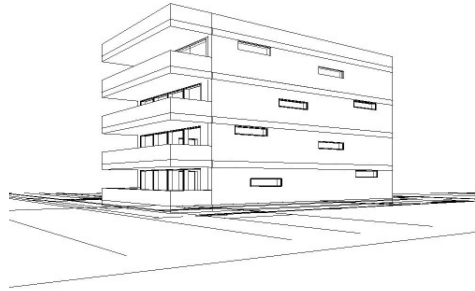
_B 35



_rohling

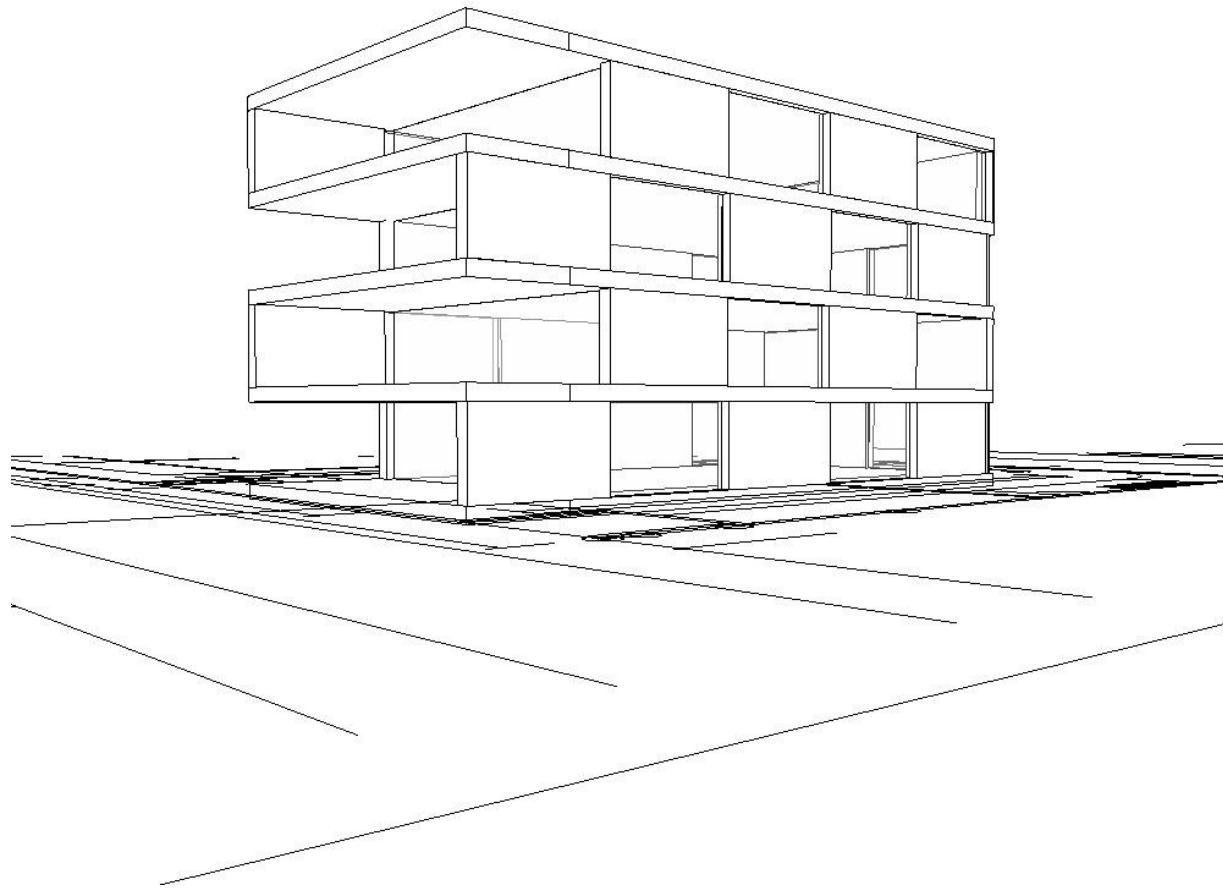
_B 35

_lowexplusarch



_entwicklung von drei varianten

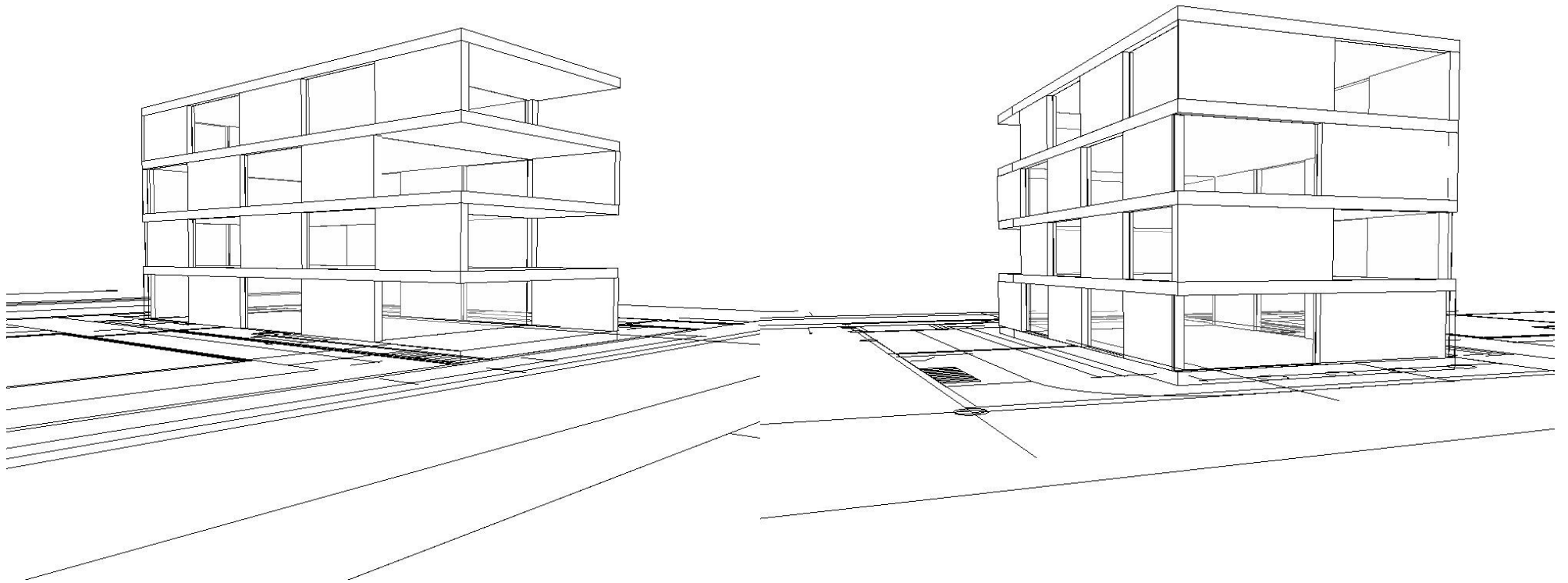
_B 35



_endmodell süd

_B 35

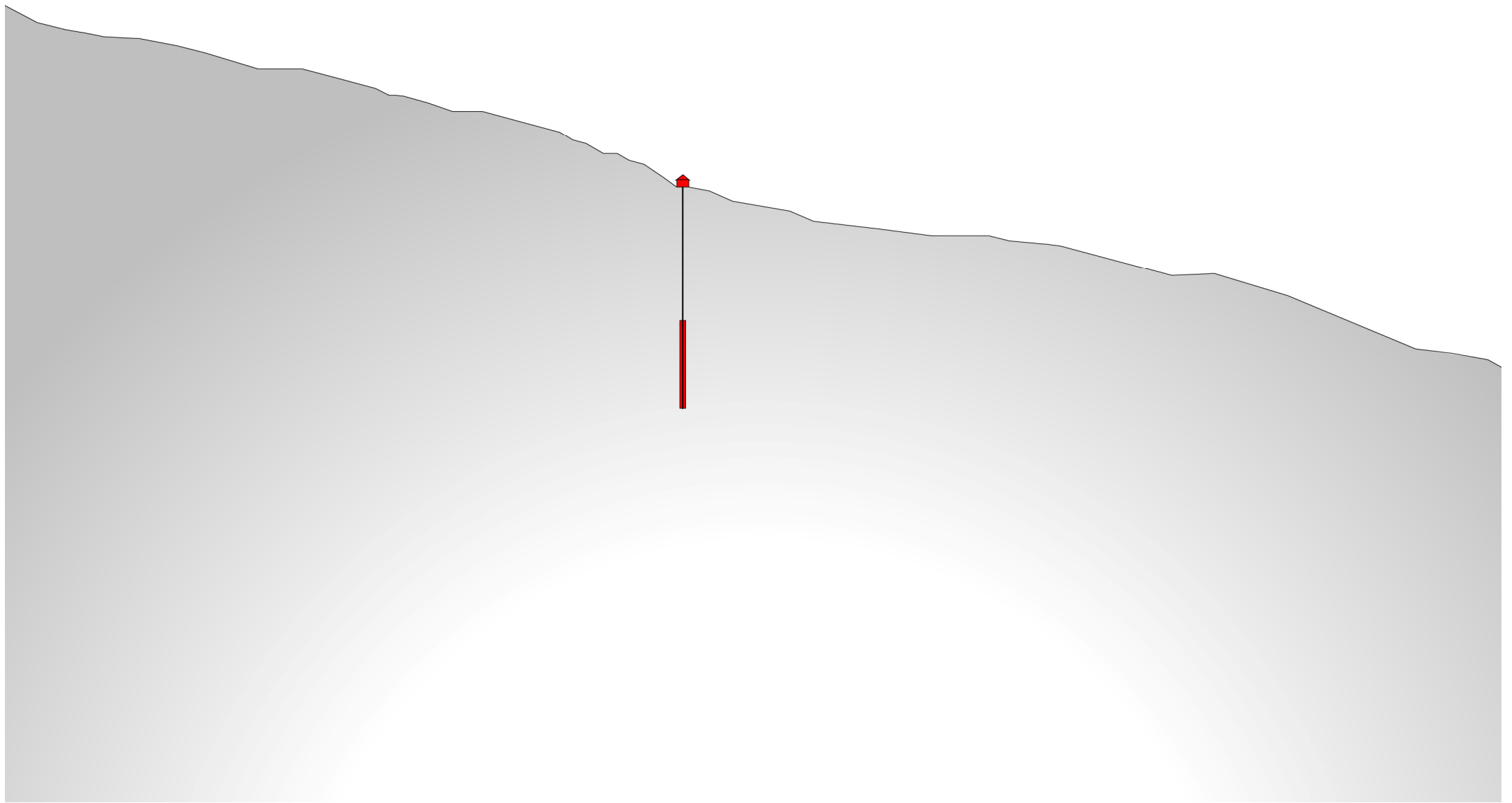
_lowexplusarch



_endmodell west/nord

_B 35

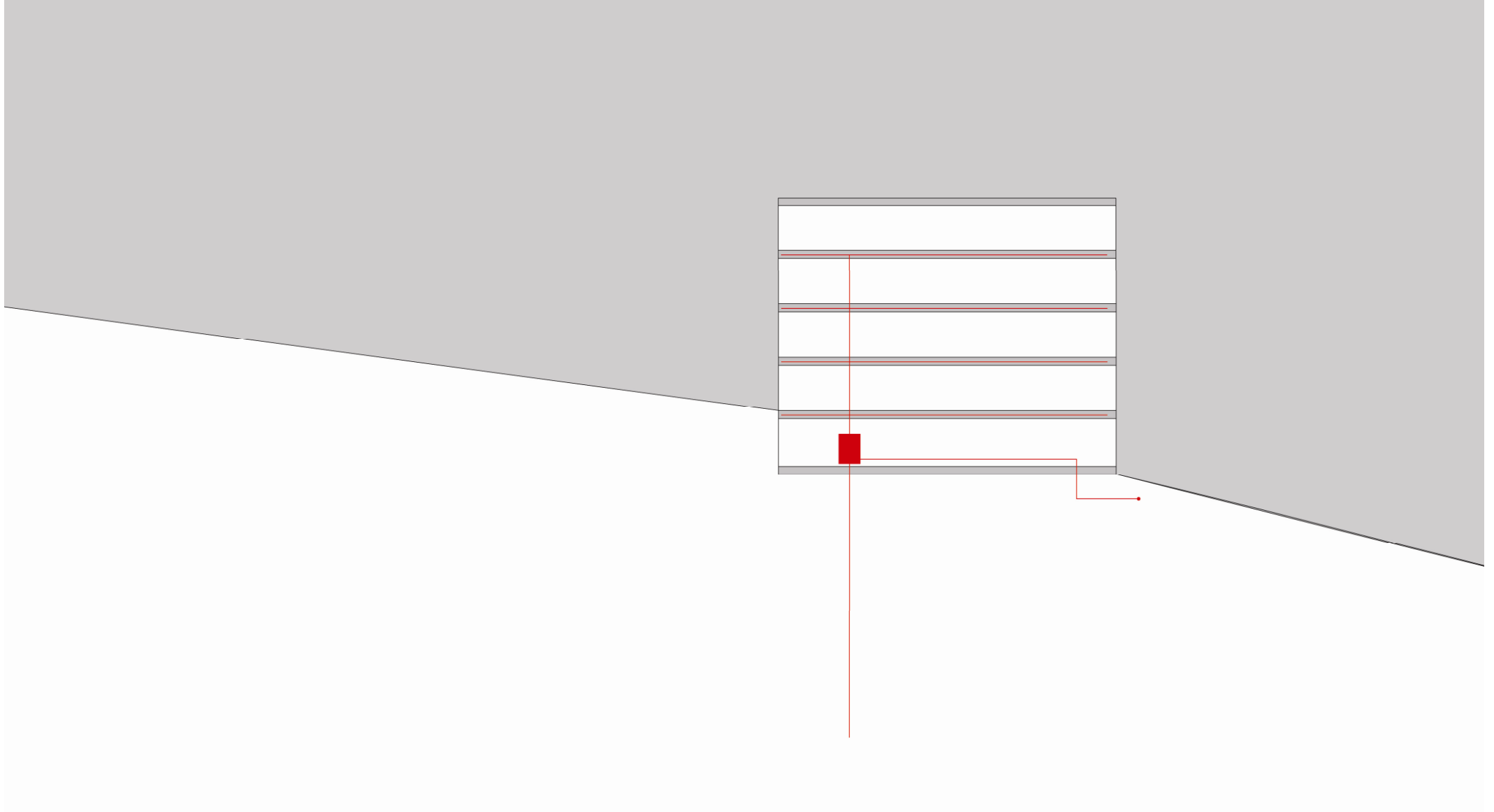
_lowexplusarch



_anergiequelle

_B 35

_lowexplusarch



_primäre anergiequelle

_B 35

_lowexplusarch

ENVIRONMENT

outside temp: °C temp. energy source: °C
 inside temp: °C WP quality grade:

GENERATION / CONVERSION SYSTEM

Heat pump borehole water/glyc CoP:
 supply temperature:

STORAGE SYSTEM

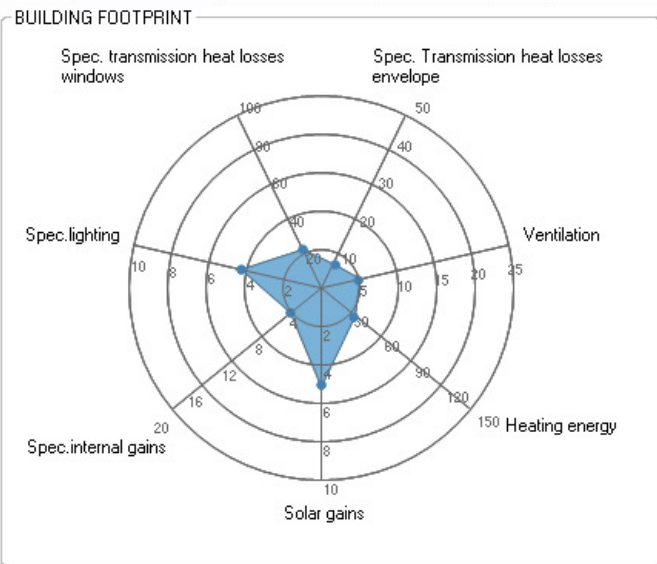
No storage efficiency:
 solar fraction:

DISTRIBUTION SYSTEM

Boiler Position efficiency:
 Insulation
 Design temperature
 Temperature drop

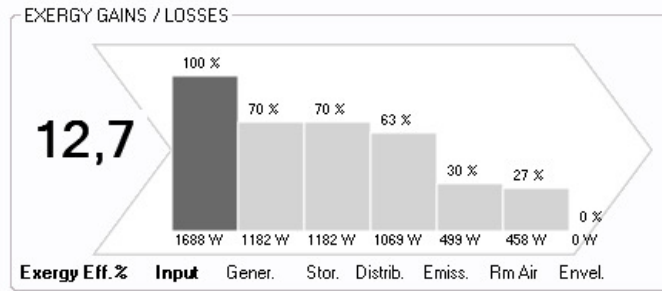
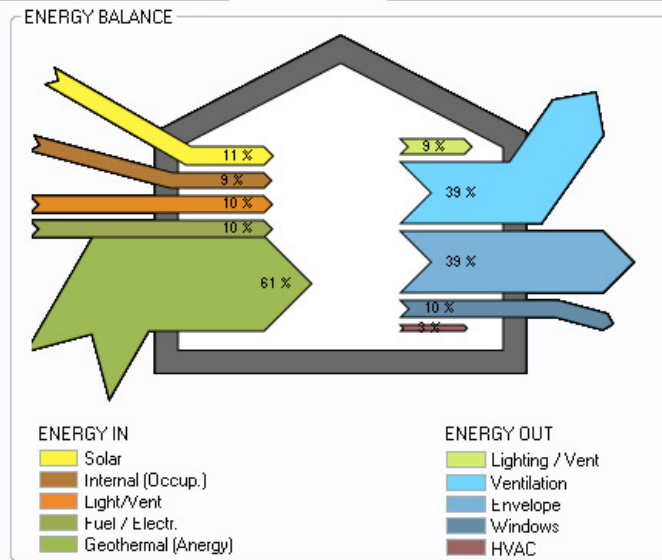
EMISSION SYSTEM

Slab heating supply temp.
 return temp.
 max. heat emission:
 efficiency:



PERFORMANCE INDICES

Spec. transmission heat losses windows	22	W/m2
Spec. transmission heat losses envelope	5,538	W/m2
Spec. ventilation heat losses	5,176	W/m3
Spec. heat demand	32,93	W/m2
Solar gains	5,154	W/m2
Spec. lighting power	4,260	W/m2
Spec. Internal gains	4,006	W/m2

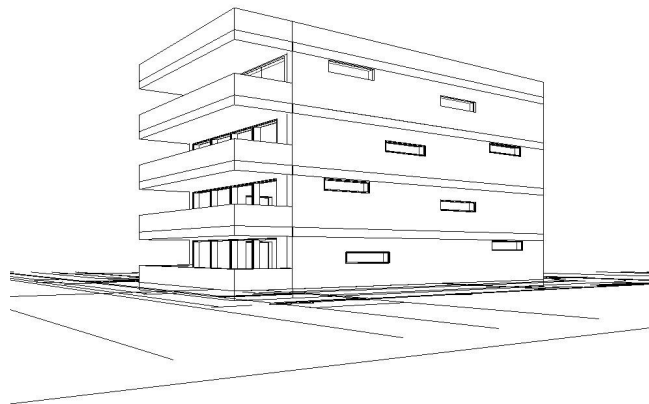


_varinante1 daten

_wand/dach 0,3 W/m²K
 _fenster/türen 1,0 W/m²K

_glas 0,75

_lowexplusarch



_B 35

ENVIRONMENT

outside temp: °C temp. energy source: °C
 inside temp: °C WP quality grade:

GENERATION / CONVERSION SYSTEM

Heat pump borehole water/glyc CoP:
 supply temperature:

STORAGE SYSTEM

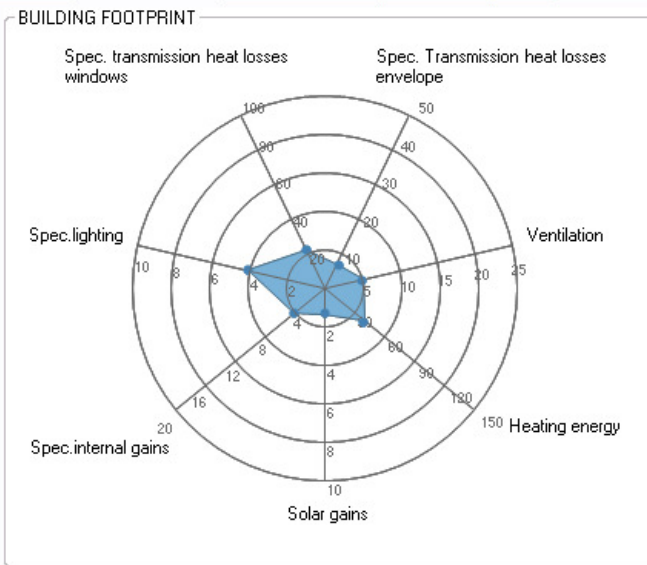
No storage efficiency:
 solar fraction:

DISTRIBUTION SYSTEM

Boiler Position efficiency:
 Insulation
 Design temperature
 Temperature drop

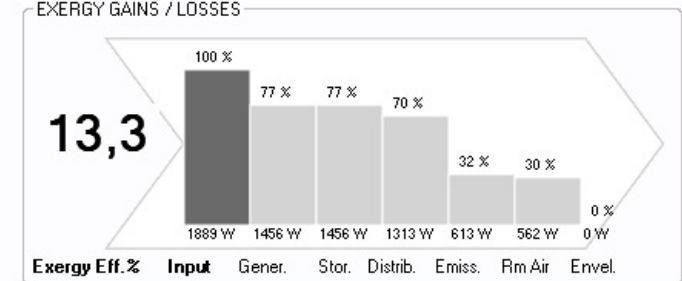
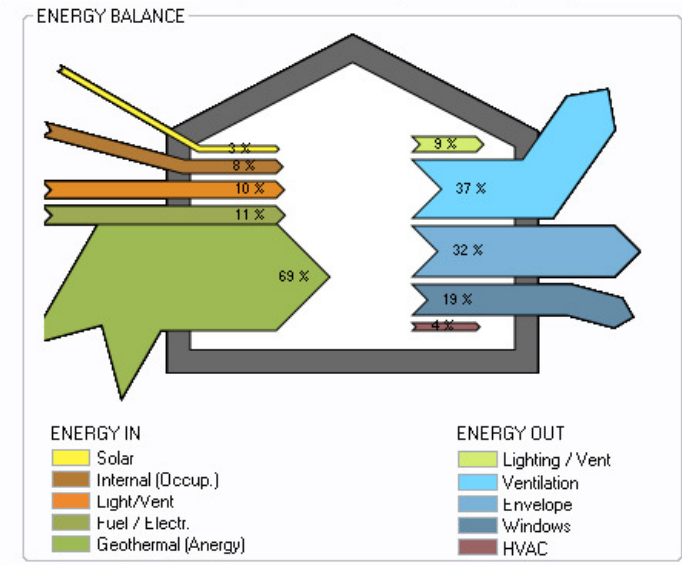
EMISSION SYSTEM

Slab heating supply temp.
 return temp.
 max. heat emission:
 efficiency:



PERFORMANCE INDICES

Spec. transmission heat losses windows	<input type="text" value="22"/> W/m2
Spec. transmission heat losses envelope	<input type="text" value="5,436"/> W/m2
Spec. ventilation heat losses	<input type="text" value="5,176"/> W/m3
Spec. heat demand	<input type="text" value="39,17"/> W/m2
Solar gains	<input type="text" value="1,373"/> W/m2
Spec. lighting power	<input type="text" value="4,098"/> W/m2
Spec. Internal gains	<input type="text" value="3,965"/> W/m2

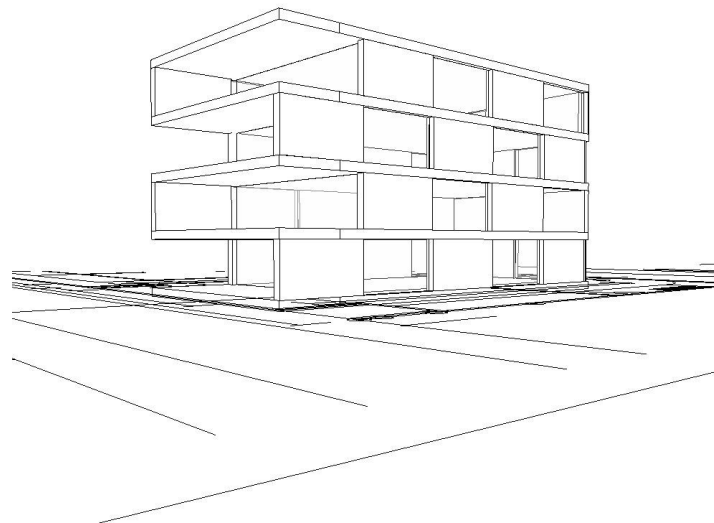


_endmodel daten

_wand/dach 0,3 W/m²K
 _fenster/türen 1,0 W/m²K

_m-glas 0.12

_lowexplusarch



_B 35

ENVIRONMENT

outside temp: °C temp. energy source: °C
 inside temp: °C WP quality grade:

GENERATION / CONVERSION SYSTEM

Heat pump borehole water/glyc CoP:
 supply temperature:

STORAGE SYSTEM

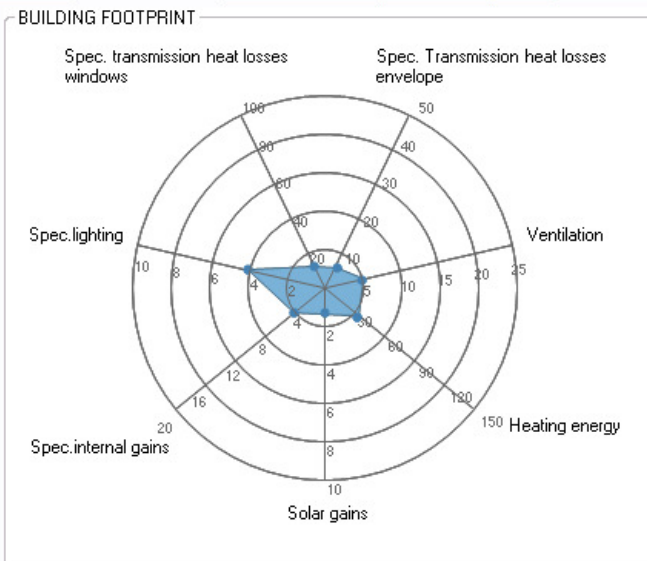
No storage efficiency:
 solar fraction:

DISTRIBUTION SYSTEM

Boiler Position efficiency:
 Insulation
 Design temperature
 Temperature drop

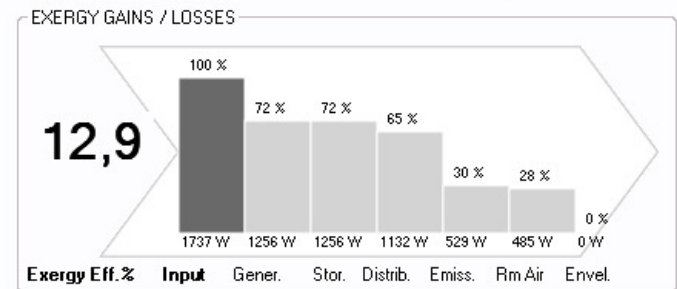
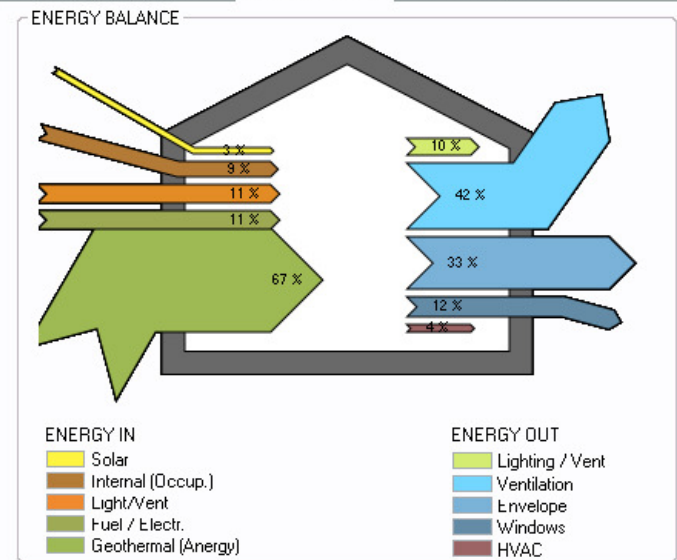
EMISSION SYSTEM

Slab heating supply temp.
 return temp.
 max. heat emission:
 efficiency:



PERFORMANCE INDICES

Spec. transmission heat losses windows	13,2	W/m2
Spec. transmission heat losses envelope	5,044	W/m2
Spec. ventilation heat losses	5,176	W/m3
Spec. heat demand	33,78	W/m2
Solar gains	1,373	W/m2
Spec. lighting power	4,098	W/m2
Spec. Internal gains	3,965	W/m2

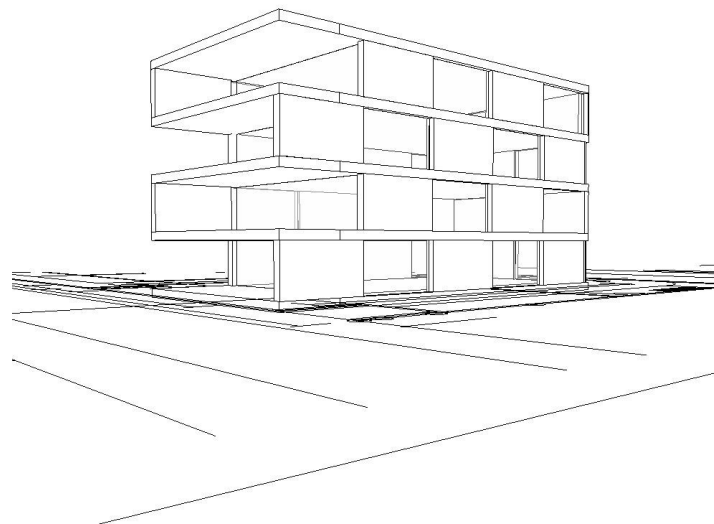


_endmodel daten

_wand/dach 0,15 W/m²K
 _fenster/türen 0,6 W/m²K

_m-glas 0.12

_lowexplusarch



_B 35

ENVIRONMENT

outside temp: °C temp. energy source: °C
 inside temp: °C WP quality grade:

GENERATION / CONVERSION SYSTEM

Heat pump borehole water/glyc CoP:
 supply temperature:

STORAGE SYSTEM

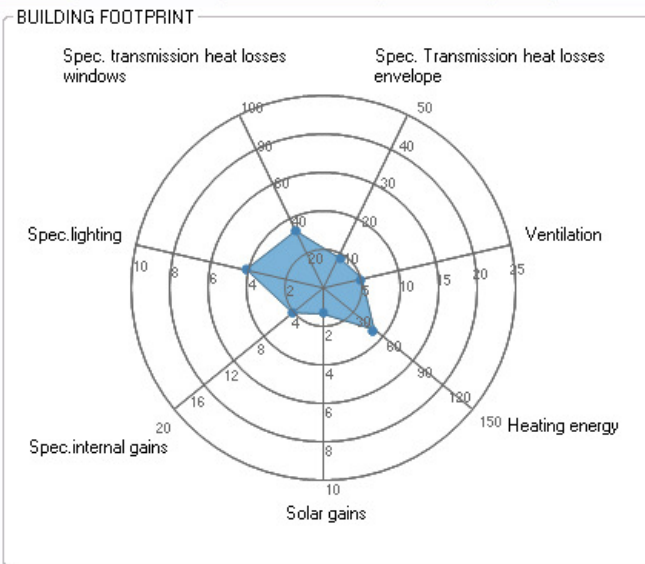
No storage efficiency:
 solar fraction:

DISTRIBUTION SYSTEM

Boiler Position: efficiency:
 Insulation:
 Design temperature:
 Temperature drop:

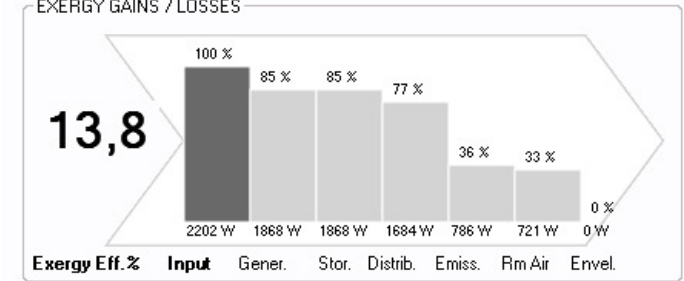
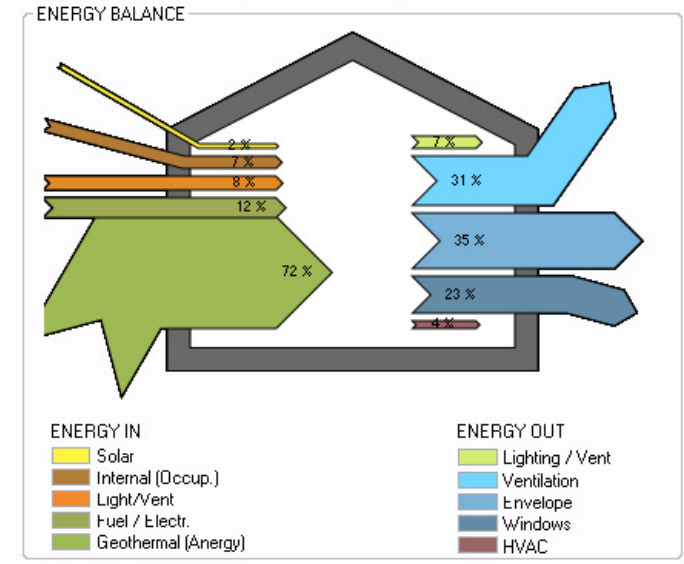
EMISSION SYSTEM

Slab heating supply temp.
 return temp.
 max. heat emission:
 efficiency:



PERFORMANCE INDICES

Spec. transmission heat losses windows	33	W/m2
Spec. transmission heat losses envelope	7,265	W/m2
Spec. ventilation heat losses	5,176	W/m3
Spec. heat demand	50,25	W/m2
Solar gains	1,373	W/m2
Spec. lighting power	4,098	W/m2
Spec. Internal gains	3,965	W/m2

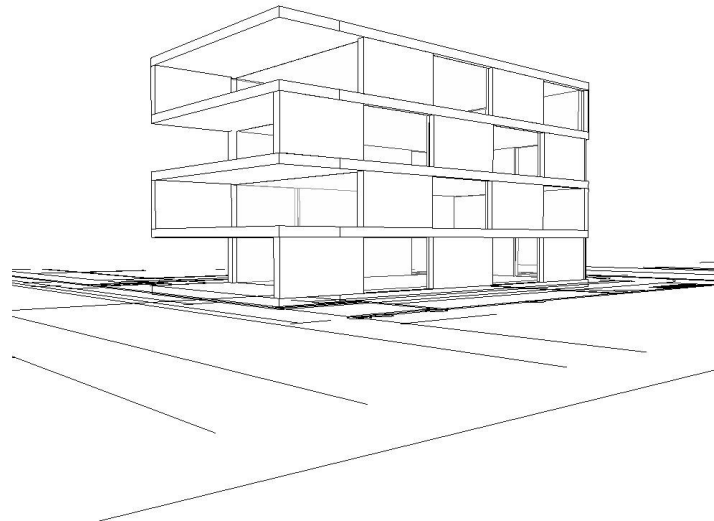


_endmodel daten

_wand/dach 1,0 W/m²K
 _fenster/türen 1,5 W/m²K

_m-glas 0.12

_lowexplusarch



_B 35

_danke

_B 35

_lowexplusarch